

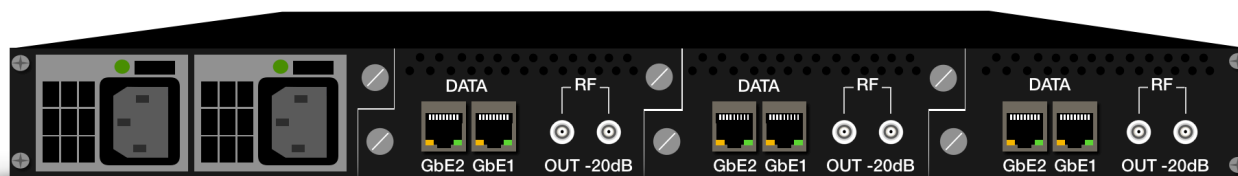


MULTI CHANNEL

IP RE-MUX SCRAMBLER/QAM

UP TO 48

RE-MULTIPLEXERS &
SCRAMBLERS &
QAM MODULATORS
RF & IP OUTPUT



DVB T2 S2 C **IP**

MODEL IDH2-3000

Model IDH2–3000 Series

The product line IDH2–3000 series can take up to three modules in one RU with each module having 16 re–multiplexers & scramblers & QAM modulators. Therefore, one RU chassis can offer up to a total of 48 transport streams with re–mux & scramblers & QAM if all three slots are utilized. The scrambler can support DVB Simulcrypt, allowing for up to four CA at the same time. This multiple IP re–mux & scramblers & QAM can integrate well with the multi–channel encoders and professional IP–IRD of Telelynx.

MAIN FEATURES

1RU modular design, supporting up to three pluggable QAM modules	1+1 redundant GbE TS–IP ports per QAM module, supporting TS–over–UDP/RTP input and output	Supports SD and HD audiovisual streams simultaneously
16 output channels per module, up to 48 QAM output channels in 1RU	Supports multiplexing, pass–through, scrambling, PSI/SI processing and QAM modulation	ITU–T J.83 Annex A/C(or A/B/C) compliant, 6MHz or 8MHz bandwidth
Supports 1+1 redundant & hot–swappable power supplies	Supports up to 64 programs per QAM channel and 16 PIDs processing capability per program	Supports up to four DVB SimulCrypt CAS(s) and complies with DVB–CSA
Multiple firmware options to enable up to four scrambling channels	Scrambling processing up to 512 programs	Supports UDP/ARP/ICMP/IGMP protocols
Supports PID filtering, pass–through, PCR auto–correction	Self–adaptive filter circuit design ensures outstanding out–of–band rejection	Front panel accessible network management and console port, supporting Web and SNMP management

SPECIFICATIONS

INPUT & OUTPUT

INTERFACE:

2 x 100/1000 Base-T Ethernet(GbE) ,
RJ-45 connector

OPERATION MODE:

Independent or redundant

DATA FORMAT:

TS-Over-IP(UDP/RTP)

MAC LAYER ACCESS:

IEEE 802.3

MUX

CAPACITY OF PROCESSING:

Up to 512 programs per module

OUTPUT CHANNEL:

16 per module

FUNCTIONS :

PID Remapping and filtering & pass through
PCR Auto correction
PSI/SI table auto-generation

SCRAMBLING PARAMETERS

MAX SIMULSCRIPT CA: 4

SCRAMBLING ALGORITHM:

Comply with DVB CSA

EMM BANDWIDTH: Up to 3 Mbps per TS

MODULATION PARAMETERS

QAM CHANNEL:

16(IDH2-3116)
32(IDH2-3132)
48(IDH2-3148)

MODULATION STANDARD:

ITU-T J.83Annex A/B/C

SYMBOL RATE:

5.0~7.0Msps, 1ksps stepping

CONSTELLATION:

16/32/64/128/256QAM

RF OUTPUT

INTERFACE:

75Ω impedance, F-type RF connector.
Main: 1 RF (IDH2-3116), 2 RF (3132),
3 RF (3148)
-20dB Test: 1 RF (IDH2-3116), 2 RF (3132),
3 RF(3148)

RF RANGE:

48~860MHz, 1kHz stepping

OUTPUT LEVEL: 98 to 115dBμV

MER : ≥ 38dB

SNR(OUT OF BAND) : ≥50dB

GENERAL

DEMISSION (WXLXH) :

483mm x 44.5mm x 450mm

WEIGHT : 6.5kg

TEMPERATURE :

0~45°C(operation), -20~80°C(storage)

POWER SUPPLY :

90 – 250 VAC, 50/60Hz
1+1 redundant hot-swappable
PSU(Optional)

CONSUMPTION : 15.4W

MODELS

IDH2-3116 (16QAM) ; 3016 (16 TS IP)
IDH2-3132 (32QAM); 3032 (32 TS IP)
IDH2-3148 (48QAM); 3048 (48 TS IP)

Notes:

Hot-pluggable is not supported make
sure the power cord was disconnected
before insert or replace modules!

